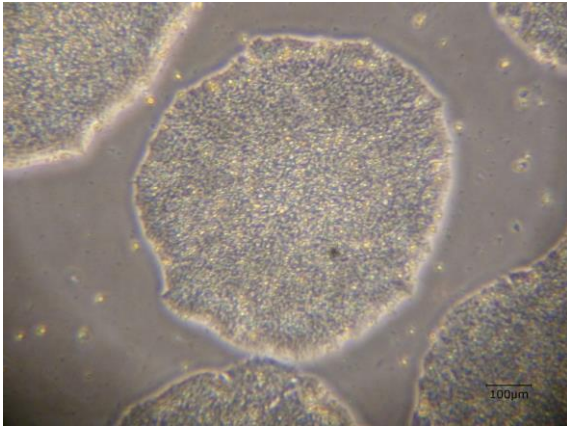
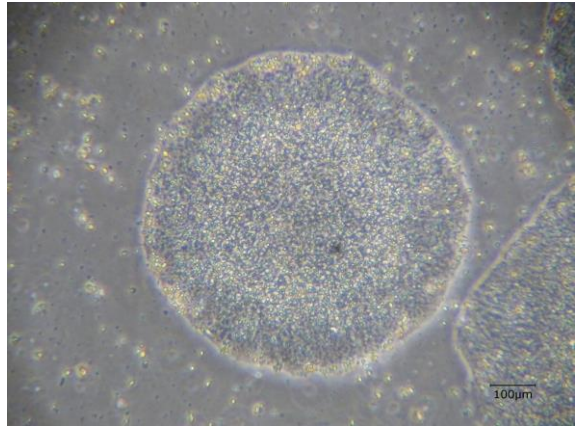


【 CiRA-j-1058 】 Morphology of iPSC colonies

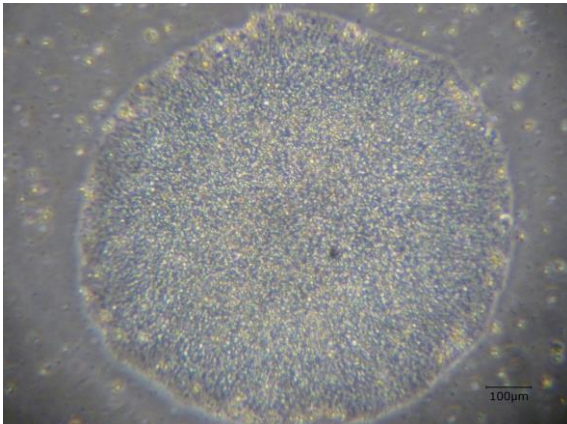
CiRA-j-1058-A: passage-3



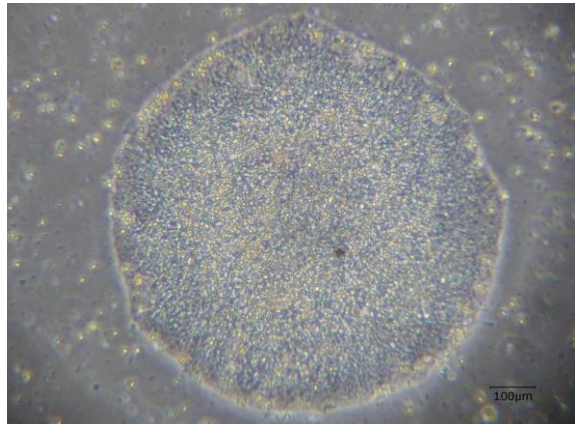
CiRA-j-1058-B: passage-3



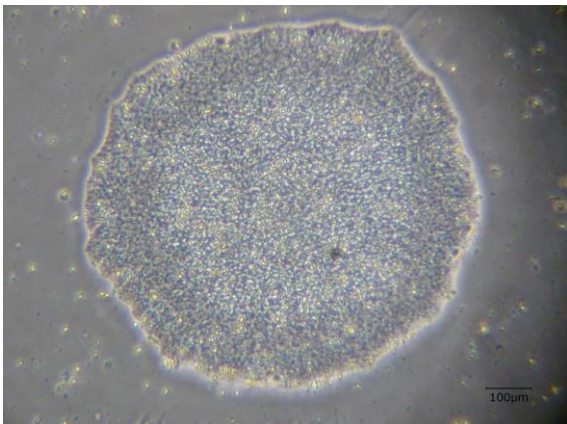
CiRA-j-1058-C: passage-3



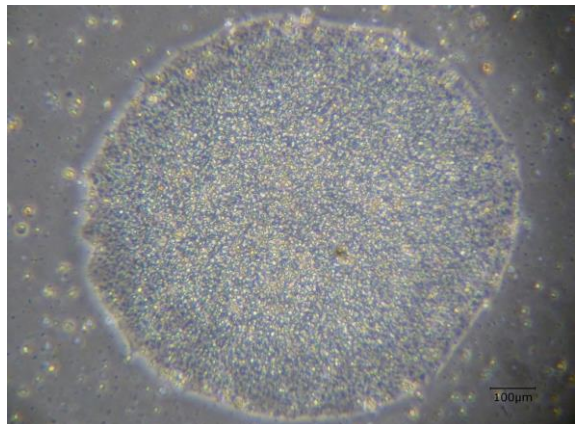
CiRA-j-1058-D: passage-3



CiRA-j-1058-E: passage-3



CiRA-j-1058-F: passage-3



(All images were captured at 4x magnification)